



WALDROP PROPERTIES, LLC
Commercial Real Estate Solutions

For Sale

Medical, Office, And Senior Living Sites Martin Medical Campus Williamston, North Carolina

- **Pricing:**
See Reverse/Below
 - **Available Sites:**
.88 Acres to 9.67 Acres
- See Reverse/Below For Additional Information

- **Survey/Site Map:**
See Reverse/Below

- **Site Amenities:**
Master Storm Water Detention

Curb & Gutter

Tree Lined, Landscaped,
And Lit Roads

Utilities Available
To Site

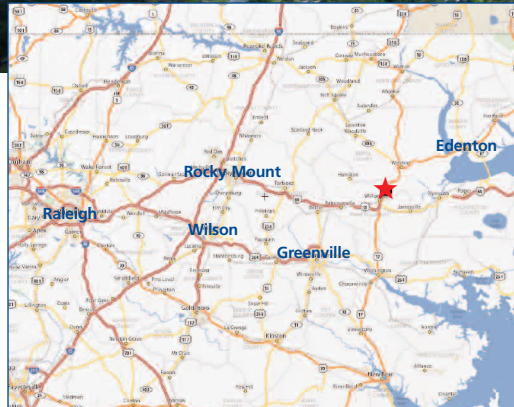
- **Comments:**
Build-To-Suit
Options Available

Lease With Purchase
Options Available

- **Location:**
Adjacent To Martin
County Hospital

Convenient Access to US
Hwy 17 & US Hwy 64

Near Williamston's
Newest And Best
Shopping



for more information contact

Michael Waldrop at 919-645-1605
michael@waldropproperties.com

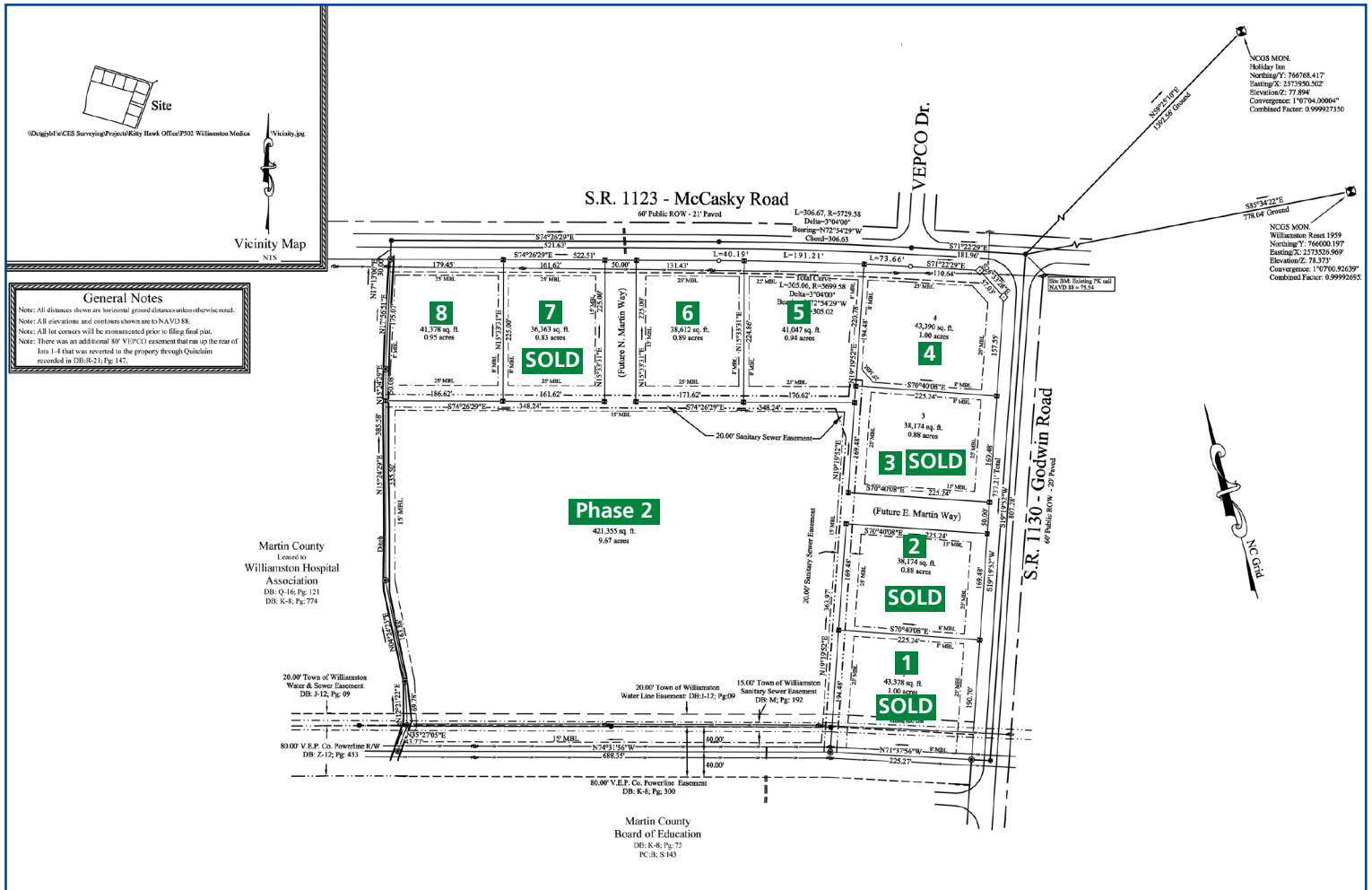
or **Joe Waldrop at 252-714-3078**
joe@waldropproperties.com

3700 Computer Dr., Suite 280
Raleigh, NC 27609
Office: 919-645-1605
Fax: 919-645-1606
www.waldropproperties.com

The information contained herein has been obtained from sources deemed reliable, however, no representation or warranty, either expressed or implied, is made as to its completeness or accuracy. Prospective buyers should make their own investigations to ascertain the accuracy of the material contained herein. This offering is subject to change, correction or withdrawal.

Martin Medical Campus

Williamston, North Carolina



Site Acreage Information

Site 1	1.00 Acres	SOLD	SOLD
Site 2	.88 Acres	SOLD	SOLD
Site 3	.88 Acres	SOLD	SOLD
Site 4	1.00 Acres	\$210,000	\$150,000
Site 5	.94 Acres	\$180,000	\$100,000
Site 6	.89 Acres	\$195,000	\$125,000
Site 7	.83 Acres	SOLD	SOLD
Site 8	.95 Acres		\$175,000
Phase 2	9.67 Acres		\$800,000

(Excellent Senior Living Site)

for more information contact

Michael Waldrop at 919-645-1605
michael@waldropproperties.com

or Joe Waldrop at 252-714-3078
joe@waldropproperties.com

